

University of Maryland School of Social Work

CENTER FOR BEHAVIORAL HEALTH & WELL-BEING RESEARCH (*BHWELL*)

IMPACT REPORT FOR FISCAL YEAR 2025

7/1/2024 - 6/30/2025

Founder and Faculty Executive Director
Jodi Frey, PhD, LCSW-C, CEAP
University of Maryland School of Social Work





INTRODUCTION

The Center for Behavioral Health and Well-Being Research (BHWell, previously BHWell Lab), housed within The University of Maryland School of Social Work (UMSSW), entered its fourth year of existence during Fiscal Year 2025 (FY25). This report includes highlights from BHWell regarding accomplishments during FY25 and plans for the upcoming year.

MISSION STATEMENT

The Center for Behavioral Health and Well-Being Research (BHWell) is committed to developing, implementing, and disseminating collaborative research, training, and education. We seek to advance behavioral health and promote well-being among individuals, families, and communities within and around Baltimore, the State of Maryland, and globally.

We focus on emerging adult and adult behavioral health and well-being, viewed and provided through a social work lens. We strive to provide leadership in the social work profession while partnering with other disciplines and community stakeholders to translate research into practice and inform future research based on practice experience and community input.

EXECUTIVE SUMMARY & GOALS FOR FY 2026

A Message from Dr. Jodi Frey, Founder and Faculty Executive Director of the BHWell Center

The Center for Behavioral Health and Well-Being Research (BHWell) works to improve behavioral health in the places where people live, work, and receive care. Rather than focusing only on academic research, BHWell partners with health systems, workplaces, government agencies, and community organizations to turn evidence into practical solutions that support behavioral health and well-being.

This report highlights accomplishments from our collective work during Fiscal Year 2025.

During Fiscal Year 2026, BHWell will expand its efforts to help organizations adopt effective health and behavioral health practices and reach populations that often do not access traditional services. Our work emphasizes prevention, early identification, and supportive environments, especially in communities, workplaces, and health care settings.

Key areas of focus this year include suicide prevention, recovery-supports for substance use disorder, integrated behavioral health workforce training, and community-engaged research.

Through training, technical assistance, and collaborative research, BHWELL aims to strengthen behavioral health and wellbeing systems while improving access to care and reducing stigma.

By connecting research with real-world implementation, BHWELL continues to support communities as they move from awareness to action, supporting healthier individuals, stronger organizations, and safer communities across Maryland and beyond.

GIVE TO BHWELL

Change starts with you. Your gift turns research into real-world care that saves lives and strengthens communities. Together, we're transforming behavioral health and well-being for all.



Scan the **QR code** to donate or [click here.](#)



26 Center Connected Faculty & Staff

12 Awards Received by BHWell Associates

25+ EDUCATIONAL WORKSHOPS & TRAININGS HOSTED

 **88** ARTICLES PUBLISHED

 **81** PRESENTATIONS DELIVERED

 **20** PRESS & MEDIA ACTIVITIES

BHWell Social Media

 LINKEDIN INCREASED FOLLOWING BY 33%

BHWell Associates were awarded

45 GRANTS & CONTRACTS

BHWell Associates mentored...

37 PHD STUDENTS

24 MSW STUDENTS

Select Project Accomplishments

41,000+
INDIVIDUALS COMPLETED ONLINE MENTAL HEALTH SCREENER

MEN'S SUICIDE PREVENTION IN MICHIGAN & OHIO

230+
SAFETY PROFESSIONALS TRAINED IN OVERDOSE EDUCATION
PROSPER

16,000+
DOSES OF NALOXONE DISTRIBUTED
PROSPER

EXPAND RESEARCH FOCUS ON PREVENTION AND EARLY SUPPORT

- Increase suicide prevention, substance use prevention and recovery, and behavior health and well-being research, working with our partners in health care, workplace, and community settings.
- Expand focus of research on chronic disease prevention and quality of life improvement.
- Help support and evaluate programs that reduce stigma and encourage help-seeking and recovery supports.

STRENGTHEN THE BEHAVIORAL HEALTH RESEARCH INFORMED WORKFORCE

- Mentor students and early-career professionals to engage in and become active consumers of practice-focused research.
- Provide training and education to social workers and others supporting health and allied health professions.
- Develop new professional learning opportunities and provide continuing education when possible.

SUPPORT RECOVERY AND WELL-BEING IN COMMUNITIES

- Evaluate and support Maryland's expansion of their recovery-supportive workplace initiatives.
- Help employers and community organizations create environments that support mental health and substance use recovery

GROW COMMUNITY-ENGAGED RESEARCH

- Collaborate with community and government partners to co-develop research and program evaluation initiatives.
- Help partners use behavioral health, health, and injury data to guide prevention efforts.
- Share findings in accessible formats, not only academic publications.

BHWell's role is to help close the gap between research and real-world practice by working directly with organizations to make sustainable change.

BHWELL PROGRAM & PROJECT HIGHLIGHTS

Below are select new or continuation projects supported by external funding during FY25.



Identification and Promotion of Opportunities for Usage of Maryland Violent Death Reporting System (MVDRS) Data to Inform Local Homicide and Suicide Prevention Efforts in Maryland

PI: Laurie Graham

Funder: Maryland Department of Health

Dates: March 2025 - August 2026

In partnership with the Maryland Department of Health, this project will increase broader understanding and use of MVDRS data among community organizations and health departments that will help guide suicide and homicide prevention efforts across Maryland. These efforts aim to increase data use to inform interventions designed to decrease homicide, interpersonal violence, and suicide. Community-facing materials and trainings will be produced to inform prevention program development, promote new and ongoing MVDRS data access, and support efforts to use MVDRS data in funding applications and program evaluations.

Maryland Recovery Friendly Workplace (RFW): A Project Part of Partners in Research on Opioids, Substance Use, Psychological Health, Employment, and Recovery (PROSPER)

PIs: Marianne Cloeren and Jodi J. Frey

Funder: Behavioral Health Administration, Office of Community Based Access and Support of the Maryland Department of Labor

Dates: January 2024 - September 2027

The Recovery Friendly Workplace program promotes supportive workplace environments for individuals in recovery from mental health and substance use disorders. Drs. Marianne Cloeren and Jodi Frey serve as evaluation and research advisors to the Maryland RFW Pilot Program. Since 2025, this project has collaborated with national and state partners to evaluate program implementation, develop data collection tools, and align Maryland's efforts with national standards. The team has conducted interviews with the program's Recovery Friendly Advisors, participating employers, and key stakeholders to assess program effectiveness and identify opportunities for growth. In addition to evaluation, this project has helped shape strategies for program expansion and regularly participate in RFW-related events, advisory councils, and technical assistance efforts.



Peer-Focused Education to Enhance Recovery (PEER): A Project Part of Innovations in Recovery through Infrastructure Support (IRIS)

PI: Jay Unick

Funder: University of Maryland, Baltimore, Center for Addiction Research, Education, and Services (CARES)

Dates: May 2024 - October 2025

Building off of prior work by Innovations in Recovery through Infrastructure Support (IRIS), this project further develops research skills for peer workers and increases knowledge of peer recovery for health science students and professionals. Using key stakeholder advisors representing graduate students, faculty, health science professionals, and peer workers, through a modified Delphi process, this project furthers develop and codifies curriculum materials from the successful pilot of IRIS's Recovery Research Fellowship. The aim is to enhance recovery research with greater grounding in peer recovery and health science research with more people who identify as peers.

COLLABORATIONS

BHWell's infrastructure currently includes a Faculty Executive Director, Program Director, and Public Relations Specialist. 17 SSW faculty and staff have signed Associate agreements. Currently, faculty and staff are not paid for their time by BHWell, but associate their projects with the Center.

Faculty Executive Director, Dr. Jodi J. Frey
Program Director, Amanda Mosby
Public Relations Specialist, Erika Shook

UMSSW AFFILIATED FACULTY AND STAFF

1. Michele Beaulieu, MSW, LCSW-C
2. John Cagle, MSW, PhD
3. Iris Cardenas, PhD, MSW, LSW
4. Neijma Celestine-Donnor, JD, MSW, LCSW-C
5. Jon Gilgoff, PhD, MSW
6. Laurie Graham, PhD, MSW
7. Geoffrey Greif, PhD, LCSW-C
8. Seante Hatcher, MSW, LCSW-C
9. Karen Hopkins, PhD, MSW
10. Brook Kearley, PhD, MA
11. Ericka Lewis, PhD, LMSW
12. Vera Men, PhD, MPH
13. Megan Meyer, PhD, MSW
14. Lynn Michalopoulos, PhD, AM
15. Nalini Negi, PhD, MSW
16. Theda Rose, PhD, MSW
17. Paul Sacco, PhD, MSW
18. Corey Shdaimah, PhD, LLM, LLB
19. Jay Unick, PhD, MSW
20. Fernando Wagner, ScD, MPH
21. Darren Whitfield, PhD, MSW
22. Cheuk Yui Yeung, PhD, MPH

FACULTY & STAFF

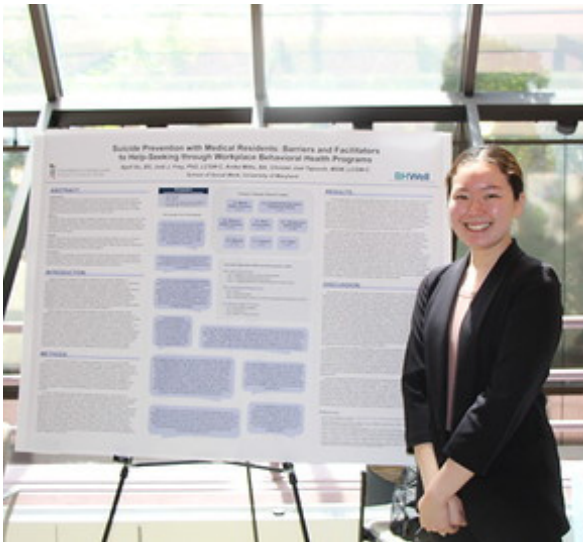
BHWell Associates worked cross-disciplinary to develop collaborations internally and externally of the Center.

- Dr. Jay Unick participated on a panel to discuss global mental health assessment during an online workshop titled, *Global Mental Health Learning Series: Cultural Contexts and Research Methodologies*.
- Michele Beaulieu co-developed and co-presented a CPE course on *Reproductive Rights as Human Rights, Social Work and Reproductive Justice*.
- Dr. Jodi Frey collaborated with partners at the Maryland Behavioral Health Administration to promote Man Therapy and the new BHWell-connected Boys and Men's Health Collaborative, during Men's Health Month in June.
- Dr. Jon Gilgoff collaborated with colleague, Dr. Derek Griffith of University of Pennsylvania, on Movember's U.S. Men's Health Report
- Several members participated in the UMBrella Women's Group:
 - Amanda Mosby applied to and was accepted into the UMBrella Coaching Program Cohort 7.
 - Drs. Karen Hopkins and Megan Meyer presented Women's Leadership Development and the Human-Centered Framework at the UMBrella Women's History Month Symposium.+
 - Dr. Jodi Frey remains an active UMBrella Board member.
- Dr. Jodi Frey worked with Prism Shilling (Office of ADR), and Dr. Corey Shdaimah (Faculty & Thursz Professor), to plan and facilitate SSW's 1st Social Justice Research Day. This half-day, into the evening event highlighted social justice in all aspects of research including forms of knowledge, methodologies, and dissemination from a multidisciplinary perspective. This event was a huge success with 22 research posters, and had over 100 faculty, staff, students, alumni, and community partners from UMB community. Several BHWell students, faculty and community partners presented their research and participated in the sessions.
- Dr. Ericka Lewis collaborated with the Psychology Student Clinic at Florida State University to explore the engagement of Black clients in therapy services.
- Dr. Megan Meyer collaborated with and mentored students in the United for Paid Placements (UPP) cross-university collaboration with Morgan State and Salisbury University.
- Dr. Megan Meyer led an application for and received the University Psychedelic Education Program (U-PEP) scholarship funded by the Joe and Sandy Samberg Foundation to support the development of masters-level curriculum and CPE programming in psychedelics and PAT; she recruited additional faculty from UMSSW and UMSON to join this application and interprofessional team.
- Dr. Theda Rose collaborates with leaders at National Institutes of Health/Duke University, Environmental Influence on Child Health Outcomes (ECHO) Program.
- Dr. Theda Rose collaborates with Dr. Tanya Sharpe (PI; Factor-Inwentash Chair in Social Work in the Global Community, University of Toronto) on the In the Aftermath project.

- Dr. Fernando Wagner collaborated with international leaders on the research project *Factores psicosociales de protección de conductas suicidas, sintomatología depresiva y consumo de sustancias psicoactivas en adolescentes de los estados de Querétaro y Oaxaca: Knowledge Translation en el ámbito educativo*
- Dr. Jodi Frey led the Behavioral Health Core application for a \$25M grant submitted in partnership with UMB SOM and Johns Hopkins University, with BHWWell members, Drs. Jay Unick, Vera Men, Anthony Yeung and others for the Agency on Health Research Quality. Unfortunately, due to organizational changes at the agency, the grant was not reviewed, but conversations amongst partners continue. Dr. Frey submitted another grant to PCORI and included some of the AHRQ grant partners on that proposal that is currently under review in the area of suicide prevention.
- Dr. Jodi Frey and Dr. Vera Men presented an overview of evidence-based and evidence-informed suicide risk assessment, response, and prevention strategies post-discharge from ED and in-patient psychiatric hospital units for about 20 University of Maryland, Medical System (UMMS) leaders. As a follow-on, Dr. Frey has been asked and has joined the UMMS Psychiatric Emergency Services (PES) sub-committee as a consultant, where together, they are working to further identify next steps for overall system level policies and procedures for suicide prevention

STUDENTS

This year, BHWWell continued to generate strong interest from students, alumni, and faculty. BHWWell Associates mentored 24 MSW students and 37 PhD students.



POLICY ADVOCACY & RELATED WORK

- Dr. Frey (with Dr. Marianne Cloeren) continued to work closely with the MD Departments of Health and Labor to advise regarding state policy and to evaluate the state's Recovery Friendly Workplace program.

- Dr. Graham, Dr. Jodi Frey, Dr. Nadine Finigan-Carr from the UMB Center for Violence Prevention, and Dr. Peter Phalen from the SOM Department of Psychiatry, in addition to Amanda Mosby, Erika Shook and MSW student April Xu are working closely with the MD Department of Health to expand use and advise regarding program policy for the MD Violent Death Reporting System (MVDRS).
- Dr. Jodi Frey presented to the leadership of the University of Maryland Medical System hospital systems to advise regarding policies for patient suicide prevention. Dr. Frey is now participating on the Psychiatric Emergency Services Committee in an advisory role.

EDUCATION & TRAINING

BHWell members **hosted at least 25 educational workshops and training courses.** A sample of such training is included below:

- Virtual webinar, Why Suicide Is Different: Essential Information for Caregivers & Employers (Dr. Jodi Frey and Christel Joel Tajouh, PhD student).
- Virtual webinar, Integrating Man Therapy into Workplace Mental Health & Suicide Prevention (Dr. Jodi Frey).
- Virtual webinar, Implementing Evidence-Based Recovery Support Services for Individuals with Opioid Use Disorder (Dr. Jay Unick).
- National hybrid event for World Suicide Prevention Day, State of Mind: Analyzing Current Trends in Workers' Mental Health (Dr. Jodi Frey).
- Presentations during the UMSSW Lunchtime Research Seminar: Dr. Ericka Lewis focused on her research with Black fathers, including father-in-law/son-in-law relationships, engagement strategies, and the Black Female Fatherhood Scholars Network, and Dr. Karen Hopkins presented her research related to supervision, management, leadership, and organizational learning and capacity building.
- UMSSW co-hosted a Naloxone in the Workplace meeting with UMSOM, Maryland Department of Health, and Johns Hopkins Education and Research Center for Occupational Safety and Health (JHU ERC) at JHU Bloomberg School of Public Health (Dr. Jodi Frey with SOM faculty, Dr. Marianne Cloeren).
- Presentation, Got Naloxone? Participant Training on Naloxone and trained 49 people and gave out 36 kits (72 doses) of naloxone (Drs. Marianne Cloeren and Jodi Frey).
- Facilitated a Train the Trainer Training for Construction Safety Professionals and trained 8 people and gave out 639 kits (1278 doses) of naloxone (Drs. Jodi Frey and Marianne Cloeren).
- Panel presentation to discuss Recovery Friendly Workplace efforts during the UMSSW Critical Convo, Maryland's Recovery Friendly Workplace Pilot Program: Innovative Ways to Support Recovery Through Our State (Dr. Jodi Frey with UMSSW alumni, Casey Tiefenwerth now working at the MD Dept. Of Labor and Casey Barna from the Behavioral Health Administration).

- Panel presentation to discuss Data-to-Action: Overdose Prevention in the Workplace presented by Dr. Jodi Frey in collaboration with Jacqueline Shanks, Center for Environmental, Occupational, and Injury Epidemiology at MDH and Dr. Clifford Mitchell, Environmental Health Bureau at MDH and hosted by Partnership for a Safer Maryland (Dr. Jodi Frey).
- Developed, led and moderated the 9 month-long Continuing Interprofessional Education workshop series titled, Multidisciplinary Perspectives on the Science and Practice of Psychedelic Therapies, which was supported by the IPE Center through its seed grant program (Dr. Megan Meyer).
- Attended the Kevin's Song Annual Conference and hosted a vendor table to spread the word about Man Therapy in Michigan (Erika Shook).
- Graduated first cohort of 12 diverse women professionals through the certificate in Human-Centered Leadership in Health and Human Services (Dr. Karen Hopkins).
- Conducted the following training sessions (Dr. Karen Hopkins)
 - Navigating Difficult Dialogues in the Classroom (2 sessions)
 - Navigating Policy Shifts
 - Universal Design
 - FOIA Training
 - Emerging Trends and Challenges in Publication Ethics
- Hosted the first SSW Social Justice Research Day focused on social justice, in full collaboration with the Thursz Professorship and the Office of the ADR and additional support from SSW OASIS (Dr. Jodi Frey).
- Co-facilitated 3 Naloxone training sessions for UMSSW faculty, staff and students (Michele Beaulieu with Erika Shook, Dr. Jay Unick and others from SSW; Dr. Jodi Frey led the evaluation for this project).
- Conducted 2 trainings for students in the Interprofessional HIV Training program which includes faculty from across the University; the first training was on implicit bias and the second training was on working with LGBTQ+ communities (Dr. Darren Whitfield).
- Dr. Frey is working closely with Seante Hatcher to develop up to 3 possible SSW certificate programs that would be supported and promoted by BHWWell. These include suicide prevention with CAMS training; Couples Counseling, and Occupational and Environmental Health with a Behavioral Health carve out certification. More will be developed this summer and fall.

FUNDING

We continue to seek financial support to advance research, evaluation, and training that impacts essential behavioral health programs, policies and services for individuals, families, and communities through the BHWELL Research Impact Fund, Scholarship and Stipend Awards, and Endowment support.

FY25 PROPOSALS

BHWELL Associates successfully **submitted 67 funding proposals** in FY25.

Federal proposal this year included applications to:

- Administration for Children & Families
- Agency for Healthcare Research and Quality
- Department of Defense: Traumatic Brain Injury and Psychological Health Research Program for the Office of the Congressionally Directed Medical Research Programs
- Health Resources and Services Administration
- National Center for Advancing Translational Sciences
- National Institute on Aging
- National Institute of Child Health and Human Development
- National Institute of Mental Health
- National Institute on Drug Abuse
- National Institute on Minority Health and Health Disparities Loan Repayment Program
- Substance Abuse and Mental Health Services Administration
- National Institute of Nursing Research
- U.S. Bureau of Justice Assistance
- U.S. Office on Violence Against Women

FY25 AWARDS

BHWELL Associates were awarded **45 new/continuation grants and contracts** in FY25.

Federal sponsors who awarded new grants this year included:

- Department of Defense: Traumatic Brain Injury and Psychological Health Research Program for the Office of the Congressionally Directed Medical Research Programs
- Health Resources and Services Administration
- National Institute on Aging
- National Institute on Drug Abuse
- National Institute of Mental Health
- National Institute on Minority Health and Health Disparities Loan Repayment Program
- U.S. Bureau of Justice Assistance

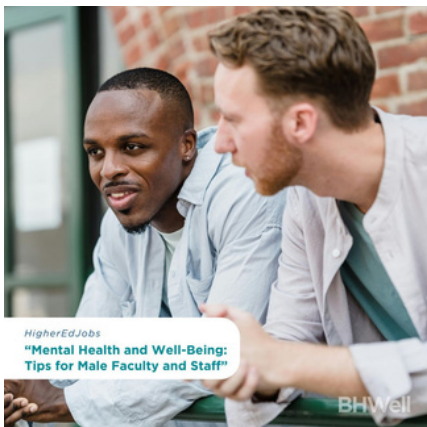
Examples of non-federal funders who have supported and/or continue to support BHWell-connected research projects and programs:

- Erin Levitas Foundation
- Gilead Sciences
- The Horizon Community Foundation
- JP Morgan Chase Foundation
- Northwestern University - Feinberg School of Medicine; National Institute of Drug Abuse (NIDA)
- State of Maryland - Maryland Administrative Office of the Courts
- State of Maryland Erin Levitas Initiative for Sexual assault Prevention
- State of Maryland - Maryland Department of Health, Environmental Health Bureau, Prevention and Health Promotion Administration
- State of Maryland - Maryland Department of Health - Behavioral Health Administration
- State of Maryland - Maryland Department of Housing and Community Development
- State of Maryland - Maryland Department of Labor
- State of Michigan - Michigan Department of Health and Human Services
- Trustees of Indiana University - Indiana University
- University of Maryland, Baltimore, Center for Addiction Research, Education and Service (CARES), Science to Systems Pilot Grant Program
- University of Maryland, Baltimore, Center for Global Engagement Global Curriculum Internationalization Grant through the University of Maryland Baltimore
- University of Maryland, Baltimore, Center for Interprofessional Education Interprofessional Education (IPD) & Interprofessional Care (IPC) Seed Grant
- University of Maryland Institute for Clinical and Translational Research - Community Engaged Research Grant Program
- University of Maryland Institute for Clinical and Translational Research - Partnership Development Voucher Award
- University of Maryland, School of Medicine, Program in Health Equity and Population Health Seed Grant Initiative
- University of Maryland School of Social Work, Competitive Innovative Research Award

PRESS & MEDIA

BHWell-focused research, programs, and other activities are often shared with local and national media outlets in addition to our UMB community. BHWell participated in 20 press and media activities. Some press and media activities from FY25 include:

1. **June 25, 2025:** Dr. Jodi Frey was interviewed for an article in Higher Ed on “Mental Health and Well-Being: Tips for Male Faculty and Staff.”
2. **June 11, 2025:** Dr. Jay Unick’s project, IRIS, was featured by the University of Maryland, Baltimore, in their series “Breakthroughs Can’t Wait” with “How Dr. Jay Unick and IRIS Want to Change the System.”
3. **June 6, 2025:** Dr. Karen Hopkins interviewed by the Baltimore Sun, Series on Innovations in Education. Focus was on leadership education and the Human-Centered Leadership in Health and Human Services Certificate.
4. **May 7, 2025:** Dr. Jodi Frey’s project, Man Therapy Ohio, was featured as part of a large TV program with NBC4 of Ohio, “Be A Voice: Ohio Suicide Prevention Special.”
5. **April 4, 2025:** Dr. Paul Sacco was interviewed for the article Older Adults and Alcohol Are Not a Good Mix in Next Avenue.
6. **March 17, 2025:** Dr. Jodi Frey was interviewed about workplace mental health and workplace stress for the Society for Human Resources Management (SHRM) Magazine.
7. **March 2025:** Neijma Celestine-Donnor was a guest on WPYR Morgan State Radio discussing Executive Orders impacting higher education.
8. **March 2025:** Neijma Celestine-Donnor was featured in a UMB panel podcast on “Educating for Equity in a Time of Division,” where she discussed strategies for building inclusive learning environments amid polarized political landscapes.
9. **March 2025:** Dr. Lynn Michalopoulos and colleagues were interviewed for the Moving Well Project International [Radio Guest]. Modern Voice Radio 99.5 FM, Chirundu, Zambia.
10. **February 7, 2025:** Dr. Jodi Frey was interviewed by Capital News Service about trends in Michigan’s suicide rates and what different organizations are doing to advance suicide prevention efforts in the state for an article.



11. **February 5, 2025:** Dr. Geoffrey Grief offered expert perspectives on building meaningful connections in a [Next Avenue](#) article.
12. **January 16, 2025:** Dr. Iris Cardenas was [quoted in The Latin Times](#) regarding the potential impacts of proposed changes to humanitarian visa policies. Her insights highlight the critical implications such changes could have on vulnerable populations.
13. **January 15, 2025:** Dr. Megan Meyer was [interviewed on WYPR](#) about her psychedelic therapies and the PAT series.
14. **January 11, 2025:** Man Therapy Michigan (PI: Jodi Frey) organizational partner, Trent Watford, Chair of the Berrien County Suicide Prevention Coalition, was interviewed by The Herald Palladium for an [article on the rising number of suicides in 2023 in Southwest Michigan](#).
15. **December 6, 2024:** Dr. Jay Unick was interviewed by Alex Mann at The Baltimore Sun for an article about critical items that are important to [combat the opioid crisis](#) and improve recovery efforts in Baltimore. Dr. Unick also referred Mr. Mann to one of BHWELL's community partners, Behavioral Health Leadership Institute (BHLI), to further contribute to the article.
16. **October 17, 2024:** Dr. Jodi Frey's Michigan research project intervention, Man Therapy, was [featured](#) with community partner, Thumb Community Health Partnership, in Huron County View.
17. **October 7, 2024:** Dr. Geoffrey Greif was interviewed and quoted in an article on [sibling relationships](#) in The Atlantic.
18. **Fall 2024:** Dr. Iris Cardenas featured in UMSSW Connections (Feature Article, Fall 2024): Quoted in "[Confronting IPV: Experts Discuss Next Steps During UMSSW Homecoming](#)," highlighting panel contributions on advancing survivor-centered responses to IPV.
19. **August 28, 2024:** Dr. Geoffrey Grief was featured in his blog for Psychology Today on "[How Politics Is Forcing Us to Look at Manhood](#)."
20. **August 26, 2024:** Dr. Jay Unick was [featured in an article on recent data](#) showing U.S. overdose deaths declining by Scientific American.

SOCIAL MEDIA

This year, BHWell created and disseminated social media posts highlighting newsworthy activities of BHWell Associates. Published content included posts featuring new grants, articles published, student work, training opportunities, and more.

LINKEDIN

Y4 Goal: Increase following by 5%

Y4 Results: Increased following by 33% (862 to 1,46)

FACEBOOK

Y4 Goal: Increase following by 5%

Y4 Results: Increased following by 2% (268 to 274)

HIGHLIGHTS FROM SOCIAL MEDIA



Dr. Jodi Frey and Amanda Mosby table about Man Therapy at the Ohio Suicide Prevention Foundation 2024 Midwest Suicide Prevention and Mental Health Summit.



Dr. Geoffrey Greif published in Psychology Today about interracial and intercultural marriages during the holidays.



Dr. Megan Meyer shared her thoughts about her completed research on the perspectives of social workers and nurses on psychedelic-assisted therapies.

AWARDS & ACCOLADES

Several BHWWell Associates were recognized through the SSW's Dean's Teaching Awards including:

- **Iris Cardenas** - Fall 2024, Social Work Practice with Immigrants and Refugees
- **Ericka Lewis** - Fall 2024, Social Work Practice with Individuals
- **Laurie Graham** - Spring 2025, Intimate Partner Violence: Anti-Oppressive and Healing-Engaged Practice
- **Geoffrey Greif** - Fall 2025 & Spring 2025, Family Therapy
- **Karen Hopkins** - Spring 2025, Supervision and Leadership
- **Fernando Wagner** received the UMSSW 2025 Faculty Award

Additional select faculty awards received during FY25 include:

- **Michele Beaulieu and BHWISE Fellowship Team** - JEDI 2025 Kimberle Crenshaw Group Award
- **Michele Beaulieu** - NASW-MD Community Service Award
- **John Cagle** - U-PEP Faculty Fellow Education Program
- **Neijma Celestine-Donnor and OASIS Team** - University of Maryland, Baltimore's 2025 Rev. Dr. Martin Luther King Jr. Diversity Recognition Award for Outstanding Staff
- **Laurie Graham** - Abstract of Distinction, Society for Prevention Research
- **Ericka Lewis** - ABC Award for facilitating one of the "A"bsolute "B"est "C"lasses and the Complete Classroom Award for excellence in using power points, assignments, readings, presentations, videos, guest speakers, and discussions to create a rich classroom experience
- **Fernando Wagner** - Donna Harrington Exemplary Faculty Mentor Award



PUBLICATIONS

BHWell faculty, staff and students **published 88 peer reviewed articles and book chapters** in FY25. A full list is below. (*Names in bold indicate BHWell-affiliated faculty, staff or students).

1. Singh, S., Dafoe, A., **Cagle, J. G.**, Campbell, T. C., Lum, H. D., Dorsey Holliman, B., Fischer, S. (2025). Respect for the patient-oncologist relationship may limit serious illness communication by acute and post-acute care clinicians after discharge to a SNF. *JCO Oncology Practice*, 21(2), 163-169. <https://doi.org/10.1200/OP.24.00197>
2. **Aggarwal, N., Michalopoulos, L.**, Ncube, N., Mubela, M., Simona, S. (under review). Examining Trauma, Mental Health, and Risk Behaviors among Long-Distance Truck Drivers in Zambia (submitted to *Global Social Welfare*)
3. Becker, T. D., **Cagle, J. G.**, Cain, C. L., Davitt, J. K., **Kusmaul, N.**, & **Sacco, P.** (2024). Contextualizing attitudes toward medical aid in dying in a national sample of interdisciplinary US hospice clinicians: Hospice philosophy of care, patient centered care, and professional exposure. *Palliative Care and Social Practice*, 18. <https://doi.org/10.1177/26323524241302097>
4. Becker, T. D., Cain, C. L., **Cagle, J. G.**, Davitt, J. K., **Kusmaul, N.**, & **Sacco, P.** (2024). Willingness to be present throughout patient death via medical aid in dying in a national sample of interdisciplinary US hospice clinicians: A content analysis of rationales. *Palliative Care and Social Practice*, 18, 26323524241288881. <https://doi.org/10.1177/26323524241288881>
5. Becker, T. D., Clem, S. E., **Sacco, P.**, **Cagle, J. G.**, Davitt, J. K., & **Kusmaul, N.** (2024). Further psychometric evaluation of the eight-item Hospice Philosophy Scale: Results from a national sample of interdisciplinary hospice clinicians. *Journal of Applied Gerontology*, 44(1). <https://doi.org/10.1177/07334648241265183>
6. Belcher, A., **Kearley, B.**, Kruis, N., Rowland, N., Spicyn, N., Colea, T., Welsh, C., Fitzsimons, H., McLean, K., & Weintraub, E. (2024). Correlates of staff acceptability of a novel telemedicine buprenorphine program in a rural detention center. *Journal of Correctional Health Care*, 30(4). <https://doi.org/10.1089/jchc.23.11.0097>
7. Benfer, J., Tucker, G., & **Cagle, J. G.** (2025). Describing dementia specialty care units in US nursing homes: Leveraging national survey data from HARBORS and LTCfocus. *Journal of the American Medical Directors Association*, 26(3), e105479. <https://doi.org/10.1016/j.jamda.2024.105479>
8. **Cagle, J. G.**, Stump, T. E., Tu, W., Ersek, M., Floyd, A., Van den Block, L., Zhang, P., Becker, T. D., & Unroe, K. T. (2025). A psychometric evaluation of the staff-reported EOLD-CAD measure among nursing home residents with cognitive impairment. *International Journal of Geriatric Psychiatry*, 40(1), e70037. <https://doi.org/10.1002/gps.70037>
9. **Cagle, J. G.**, Reiff, J. S., Smith, A., Echavarria, D., Scerpella, D., Zhang, T., Roth, D. L., Boyd, C. M., Hussain, N. A., & Wolff, J. L. (2024). Assessing advance care planning fidelity within the context of cognitive impairment: The SHARE trial. *Journal of Pain and Symptom Management*, 68(2), 180-189. <https://doi.org/10.1016/j.jpainsymman.2024.05.002>

10. Camacho, D., Tella-Vega, P., **Wagner, F. A.**, Santamaría-Ulloa, C., Lehning, A., Gallo, J. J., García-Peña, C. (2025). Loneliness and cognitive function in older adults living in Latin America: A systematic review. *Archives of Medical Research*, 56(4), 103182. <https://doi.org/10.1016/j.arcmed.2025.103182>
11. **Cardenas, I.**, **Aggarwal, N.**, Postmus, J. L., & **Hatcher, S.** (2025). The association between immigration status-related intimate partner violence and financial strain among women. *Journal of Aggression, Maltreatment, & Trauma*, 34(6). <https://doi.org/10.1080/10926771.2025.2516593>
12. **Cardenas, I.**, Rizo, C.F., Ward, M., & Jiwatram- Negrón, T. (2024). Systematic review of intimate partner violence interventions for Latinas in the U.S. *Trauma, Violence, & Abuse*, 25(5), 3473-3487. <https://doi.org/10.1177/15248380241253037>
13. **Cardenas, I.** (2024) Profiles of service-engaged intimate partner violence survivors: Considerations for service delivery and continuation. *Psychology of Violence*, 14(4), 250-259. <https://doi.org/10.1037/vio0000518>
14. **Cardenas, I.**, **Graham, L. M.**, Mellinger, M. S., & Ting, L. (2024). Individuals who experience intimate partner violence and their engagement with the legal system: Critical considerations for agency and power. *Journal of Health Care Law and Policy*, 27(1), 113-144. <https://digitalcommons.law.umaryland.edu/jhclp/vol27/iss1/7>
15. Clem, S. E., Zhang, P., & **Cagle, J. G.** (2025). Exploring congruency of death location preferences versus expectations: Findings from the general public in Brazil, Italy, Japan, and the U.S. *Illness, Crisis & Loss.*, 33(3), 580-599. <https://doi.org/10.1177/10541373241262378>
16. Cloeren, M., **Frey, J. J.**, & Jetton, I. G. (2024). Sidebar 2: Prevention and early treatment in the workplace setting. In R. Rosenthal, S. Levy, A. Saxon, J. Tetrault, & S. Wakeman (Eds.), *The American Society for Addiction Medicine (ASAM) Principles of Addiction Medicine*, 7th ed (Section 4, Chapter 30). Philadelphia, PA: Wolters Kluwer.
17. **Deng, Y.**, **Frey, J. J.**, Osteen, P. J., **Mosby, A.**, Imboden, R., Ware, O. D., & Bazell, A. (2024). Engaging law enforcement employees in mental health help-seeking: Examining the utilization of interactive screening program and motivational interviewing techniques. *Adm Policy Ment Health*. <https://doi.org/10.1007/s10488-024-01384-0>
18. **Deng, Y.** & Rose, T. (2024). Examining dimensions of help-seeking intentions and associations with personal mental illness stigma among racial and ethnic minority immigrants. *Journal of Community Psychology*, 53(2). <https://doi.org/10.1002/jcop.23154>
19. Fedina, L., Hong, S., Rousson, A., **Graham, L. M.**, Lee, O. J., & Herrenkohl, T. (2024). Childhood maltreatment and intimate partner violence perpetration in adulthood: An investigation into proximal and distal risk factors across the life course. *Journal of Family Violence*, 39, 247-258. <https://link.springer.com/article/10.1007/s10896-022-00468-5>
20. Finigan-Carr, N., & **Graham, L. M.** (2024). Aggressive behaviors in urban African American early adolescent girls: A systematic review of the literature. *Children and Youth Services Review*, 158, 107450. <https://doi.org/10.1016/j.chilyouth.2024.107450>
21. Flath, N., Grandpre, L., Shdaimah, C., Park, J., White, J.J., **Kearley, B.** (Under Review). Exploring black civil society perspectives of drug decriminalization reforms in the Baltimore context: A participatory action qualitative study. *Critical Public Health*

22. Forrester, P., Kahric, U, Lewis, E. M., & **Rose, T.** (2024). Family, peer, and neighborhood influences on urban children's subjective well-being. *Child and Adolescent Social Work Journal*, 41(3), 427-439. <https://doi.org/10.1007/s10560-022-00866-0>
23. **Frey, J. J.**, Spencer-Thomas, S., & Mortali, M. (in press). Strategies for organizational leaders and human resources professionals in workplace suicide prevention and postvention. In M. German (Ed.). *Suicide in the Workplace: Coping Strategies for Employees and Corporate Leaders*. New York, NY: Palgrave MacMillan.
24. **Frey, J. J., Deng, Y.**, Osteen, P. J., Imboden, R., **Mosby, A.**, Ware, O., Bazell, A., & Phillips D. (2024). How are motivational interviewing techniques associated with US healthcare employees' mental health help-seeking behaviours when using the interactive screening programme. *BMJ Public Health*, 2(2), e001293. <https://doi.org/10.1136/bmjph-2024-001293>
25. **Frey, J. J., Unick, J.**, Phillips, D., Imboden, R., **Mosby, A.**, Ware, O., Mitchell, C., & Cloeren, M. (2024). Opioid-related overdose deaths in Maryland, by industry and occupation. *Journal of Occupational and Environmental Medicine*, 66(6). <https://doi.org/10.1097/jom.0000000000003092>
26. **Frey, J. J.** (2024). The United States. In D. A. Masi (Ed.), *The 5th international employee assistance compendium* (pp. 343-349). Boston, MA: Masi Research Consultants, Inc.
27. **Frey, J. J.**, & Jinnett, K. (2024). Worker burnout: Beyond resilience to structural transformation. *Journal of Workplace Behavioral Health*, 39(3), 263-266. <https://doi.org/10.1080/15555240.2024.2373460>
28. Gantt, A. & **Greif, G. L.** (2024). Reflections on the loss of my grandson: How life events change social work practice. *Reflections: Narratives of Professional Helping*, 30(2), 69-82. <https://reflections narratives of professional helping.org/index.php/Reflections/article/view/202>
29. **Gilgoff, J. N.**, Barreira, V., Quinn, S. A., **Shook, E.**, Hamm, R. B., Frey, J. J., **Unick, J.**, Robinson, R., & Wagner, F. A. (2025). Building capacity for community-engaged peer-focused research: Results from the IRIS Recovery Research Fellowship. *Health Promotion Practice*. <https://doi.org/10.1177/15248399251315464>
30. **Gilgoff, J.N.**, Alvarado, F., & Griffith, H. (2024). Group work with boys and young men of color: Building a brotherhood for collective healing and social change. In G. Greif & C. Knight (Eds.), *A handbook of contemporary group practice: Promoting resilience and empowerment in a complex world* (pp. 313-329). Oxford University Press.
31. **Graham, L. M.**, Kafka, J. M., & AbiNader, M. A. (2024). Co-occurrence of intimate partner violence and suicide mortality among adolescents and young adults in the United States. *Journal of Adolescent Health*, 76(2), 283-290. <https://doi.org/10.1016/j.jadohealth.2024.09.019>
32. **Graham, L M.**, Hopkins, C. Q., **Cavaletto, A.**, & **Aggarwal, N.** (2024). Using restorative justice to prevent and respond to sexual violence: A qualitative study of formal practices in six countries. *Journal of Interpersonal Violence*. Advance online publication. <https://doi.org/10.1177/08862605241285877>

33. **Graham, L. M.**, Jun, H-J., Kim, J., Power, L., Devaney, J., Frederick, J., & Betz, G. (2024). Characteristics of child fatalities that occur in the context of current or past intimate partner violence: A scoping review. *Journal of Family Violence*. Advance online publication. <https://doi.org/10.1007/s10896-024-00713-z>
34. **Graham, L. M.**, Mellinger, M. S., Barth, R., Jiwatram- Negrón, T., Waller, B. Y., Messing, J. T., Bennett, C. R., & **Cavaletto, A.** (2024). The power of language to transform efforts to address intimate partner violence: Tensions in the field and pathways forward. *Families in Society*, 105(3), 457-472. <https://doi.org/10.1177/10443894241239091>
35. **Greif, G.L.**, Stubbs, V. D. & **Woolley, M.E.** (Under contract). When family relations are race relations: The strengths and challenges of interracial and interethnic marriages at a time of great divide. New York: Columbia University Press.
36. **Greif, G. L.**, Chung, Y, Lee, H., & Zhang, P. (2024). The experiences of Asian Americans who intermarry in the United States: A qualitative study. *Families in Society*, 105(4), 688-702. <https://doi.org/10.1177/10443894231193377>.
37. **Greif, G. L.**, Lee, H., & Zhang, P. (2024). The intermarriage of Whites and Asian Americans: Clinical considerations from qualitative interviews. *Journal of Couple & Relationship Therapy*, 23(3), 229-248. <https://doi.org/10.1080/15332691.2024.2307046>
38. **Greif, G.L., Woolley, M.E.,** & Stubbs, V. (2024). Views of intermarried couples: Implications for social work practice. *Social Work*, 69(3), 287-295. <https://doi.org/10.1093/sw/swae025>
39. Harfouch, O., **Whitfield, D. L., Mammadli, T.**, Eyasu, R., Volpi, C., Mansfield, M., Ebah, E., Davis, A., Zoltick, M., Cover, A., Bijole, P., Silk, R., Sternberg, D., Liu, T., Garrett, G., Jones, M., Kier, R., Masur, H., Kottlil, S., Kattakuzhy, S., & Rosenthal, E.S. (2025). A sequential mixed methods study of factors associated with low HRA completion in transgender women with abnormal anal cytology. *AIDS Patient Care and STDs*, 39(2). <https://doi.org/10.1089/apc.2024.0244>
40. Hochheimer, M., **Unick, G. J., & Sacco, P.** (2024). Risk of acute care incidents for people treated for opioid use disorder with extended-release naltrexone and buprenorphine. *Journal of Social Work Practice in the Addictions*, 4, 1-8. <https://doi.org/10.1080/1533256X.2023.2215093>
41. Hopkins, C. Q., **Graham, L. M.**, & Cavaletto, A. (in press). Magic or morass? A multidisciplinary approach to restorative practices for sexual harm prevention. *Journal of Legal Education*.
42. **Hopkins, K. & Meyer, M.** (2025). Human-centered leadership development for women in the human services. In R. Miller, C. Mangan, H. Dickson, & C. Jackson (Eds.), *Research handbook on leadership in social care and social work*. Edward Elgar Publishing.
43. **Hopkins, K.** & McBeath, B. (Eds.) (2025, in press). *Transforming the human service workplace*. Routledge.
44. Imboden, R., Tan, M., **Mosby, A., Deng, Y., Frey, J.,** Cloeren, M. (in press). Assessing employment needs of individuals with opioid use disorder: A qualitative exploration of workforce and clinical partner perspectives. *Drug And Alcohol Dependence*.
45. Jeong, J., & **Sacco, P.** (2024). Dimensionality and validity of the Gambling Motives Questionnaire - Financial among lottery loyalty program participants. *Addictive Behaviors Reports*, 20, 100570. <https://doi.org/https://doi.org/10.1016/j.abrep.2024.100570>

46. Jiwatram-Negron, T., Meinhart, M., Ward, M., **Michalopoulos, L.**, Zhan, Q., Nikitin, D., & Gilbert, L. (2024). Different forms of intimate partner violence and its association with post-traumatic stress among women who use drugs and alcohol in Kyrgyzstan. *The Journal of Traumatic Stress, 37*(2), 318-327. <https://doi.org/10.1002/jts.23017>
47. Jones, J., Edwards, O. W., Bohl, C., Caldwell, J. A., Sullivan, P. S., & **Whitfield, D. L.** (2025). Remote pre-exposure prophylaxis adherence monitoring among young, Black men who have sex with men: A feasibility and acceptability pilot study. *Current Psychology, 44*, 6421-6429. <https://doi.org/10.1007/s12144-025-07581-w>
48. Karandinos, G., **Unick, J.**, & Ciccarone, D. (2025) Mortality risk among individuals who smoke opioids compared with those who inject: A propensity score-matched cohort analysis of United States national treatment data. *Addiction, 120*(5), 1040-1045. <https://doi.org/10.1111/add.16740>
49. Karandinos, G., **Unick, J.**, Ondocsin, J., Holm, N., Mars, S., Montero, F., Rosenblum, D., & Ciccarone, D. (2024). Decrease in injection and rise in smoking and snorting of heroin and synthetic opioids, 2000-2021. *Drug and Alcohol Dependence, 263*, 111419. <https://doi.org/10.1016/j.drugalcdep.2024.111419>
50. **Kearley, B.**, Wight, H., Brey, J., Fader, J. J., & Flath, N. (2024). What's in a name? The framing of gang interventions in a city with no "gangs." *Justice Quarterly, 41*(3), 400-423. <https://doi.org/10.1080/07418825.2023.2222788>
51. Knight, C. & **Greif, G.L.** (Eds.). (2024). *A handbook of contemporary group work practice: Promoting resilience and empowerment in a complex world*. New York: Oxford University Press.
52. Lemmons, B. P., Ghosh, R. A., Bentley, B., Hollie, K. R., & **Lewis, E. M.** (2024). Contextualizing the parenting experiences of non-resident African American fathers: Insights for service providers. *Journal of Child and Family Studies, 33*, 1-23. <https://doi.org/10.1007/s10826-024-02951-7>
53. Lemmons, B. P., & **Lewis, E. M.** (2024). The in-law relationship as a context for strengthening Black fathers and families. In T. L. Alston, B. P. Lemmons, & L. S. Rollins (Eds.), *Health, Parenting, and Community Perspectives on Black Fatherhood: Defying Stereotypes and Amplifying Strengths* (pp. 95-108). Lanham, MD: Lexington Books.
54. **Lewis, E. M.**, Murugan, V., Feely, M., Williams, K. A., Sermon, M. C., & Farooq, S. (2024). Quality parenting initiative: Engaging diverse stakeholders as champions for child welfare systems reform. *Journal of the Society for Social Work & Research, 15*(3), 569-590. <https://doi.org/10.1086/722445>
55. **Lewis, E. M.**, Lemmons, B. P., Dorsey, M. S., Brown, A., & Johnson Jr, W. E. (2025). Understanding Black father involvement in education in the context of systemic inequities. *Child Welfare, 102*(6), 1-26. <https://www.jstor.org/stable/48815051>
56. Lundberg, A., Post, L., **Unick, J.**, McCarthy, D., Welch, S., Noland, K., Lawler, K., & Mason, M. (2025) Percentage of opioid tests available in US injury death investigations, 2021. *JAMA, 333*(14), 1259-1260. <https://doi.org/10.1001/jama.2024.28709>

57. **Mammadli, T.**, Mack, L. J. M., **Deng, Y.**, Betz, G., Hong, C., Runge, Z., Kamugisha, S., DeForge, B., & **Whitfield, D. L.** (In Press). Substance use among transgender and nonconforming youth living in the U.S.: A systematic review. *Social Science and Medicine*, 118330. <https://doi.org/10.1016/j.socscimed.2025.118330>
58. Mammadli, T., Call, J., Holloway, B. T., **Whitfield, D. L.**, & Walls, N. E. (2024). Adaptive transition decisions and identity exploration among transgender and nonbinary persons exposed to gender identity conversion efforts. *International Journal of Transgender Health*, 26(1), 198-214. <https://doi.org/10.1080/26895269.2024.2415681>
59. Mangum, L. C., **Whitfield, D. L.**, Chu, K., Blackstock, O. J., Eack, S. M., & Copeland, V. C. (2025). Psychosocial determinants of antiretroviral treatment adherence among Black mothers with HIV. *Affilia*. <https://doi.org/10.1177/08861099251328354>
60. Mattocks, N. O., **Yeung, C.Y.**, **Swenson, N.**, **Hopkins, K.**, Manleigh, C., & **Unick, G. J.** (2025). Medication dispensing patterns among individuals with serious mental illness using a telehealth adherence platform: A cohort study. Submitted: JAMA Network.
61. Mattocks, N. O., **Swenson, N.**, Consol, A., Phillips, H., **Hopkins, K.**, Siegel, J. L., Manleigh, C., & **Unick, G. J.** (2024). Evaluating the implementation of a telehealth Intervention in the community behavioral health workforce. Submitted: Community Mental Health Journal.
62. McBeath, B. & **Hopkins, K.** (2024). Challenges and strategies in carrying out scholarly and research projects. *Human Service Organizations: Management, Leadership & Governance*, 48(4), 409-416. <https://doi.org/10.1080/23303131.2024.2393914>
63. McLean, K., Kruis, N., Belcher, A., Weintraub, E., Fitzsimons, H., Welsh, C., Spicyn, N., Altekruise, W., & **Kearley, B.** (2024). A mixed-method exploratory assessment of provider-based stigma of opioid use disorder (OUD) and support for medications for opioid use disorder (MOUD) in carceral settings. *Harm Reduction Journal*.
64. **Men, V. Y.**, Chan, P. P. M., Schaffer, A., Steinberg, R., Mitchell, R. H., Dmetrichuk, J. M., Yip, P. S. F., Hatcher, S., & Sinyor, M. (Accepted). Suicide deaths by gas inhalation in Toronto: An observational study of emerging methods of suicide from 1998-2020. *Crisis*. <https://doi.org/10.1027/0227-5910/a001015>
65. Mirzadegan, I. A., **Lewis, E. M.**, Cole, S. L., & Meyer, A. (2025). Perceived acceptability and appropriateness of a web-based program targeting risk for anxiety in young children and their parents. *Journal of Pediatric Psychology*, 50(1), 6-17. <https://doi.org/10.1093/jpepsy/jsae040>
66. Moreno-López, M., Ramos Lira, L., Saltijeral Méndez, M. T., **Wagner, F.**, Berenzon Gorn, S. (2024). "Pues que pase lo que Dios quiera": Strategies for dealing with emotional discomfort in undocumented mexican immigrants living in the United States. *Salud Mental*, 47(5), 229-237. <https://doi.org/10.17711/sm.0185-3325.2024.027>
67. Ofonedu, M. C., **Frey, J. J.**, Ware, O. D., Hoke, K., Mitchell, C. S., & Cloeren, M. (2024). Improving identification of gig workers in national health and behavior surveys. *New Solutions*, 34(3), 172-181. <https://doi.org/10.1177/10482911241269313>
68. Post, L. A., Ciccarone, D., **Unick, G. J.**, D'Onofrio, G., Kwon, S., Lundberg, A. L., Sharma, S., Mason, M. (2025) Decline in US drug overdose deaths by region, substance, and demographics. *JAMA Netw Open*. 8(6), e2514997. <https://doi.org/10.1001/jamanetworkopen.2025.14997>

69. Rule, A. M., **Wagner, F. A., Negi, N., Tajouh-Daghuie, C. J., Rosman, L., Naiman, J., Lange, S. S., Clougherty, J. E., Vorhees, D., LaKind, J. S.** (2024). Principles and elements for creating and sustaining successful PPP for environmental community monitoring programs: Results from a scoping review and interviews. *Environmental Justice*. <https://doi.org/10.1089/env.2024.0025>
70. Russ, K. G., Das Sarma, S., Canty, T., Gilden, R., Gupta, S., **Michalopoulos, L., Patel, S.** (2025). Creating an interprofessional consortium on climate and health for higher education. In Filho, W. L., Newman, J., Lange Salvia, A., Viera Trevisan, L., Corazza, L. (Eds.). *North American and European Perspectives on Sustainability in Higher Education*. World Sustainability Series. Springer. https://doi.org/10.1007/978-3-031-80434-2_45
71. Sabri, B., Young, N., **Cardenas, I., Emezue, C., & Patch, M.** (2024). Integrating implementation science in interpersonal violence research and practice: A systematic review of barriers and facilitators of implementation. *Trauma, Violence, and Abuse*. <https://doi.org/10.1177/15248380241305567>
72. **Sacco, P., & Jeong, J.** (2025). Assessing the risk of problem gambling among lottery loyalty program members: A machine learning approach. *Addictive Behaviors*, 168, 108372. <https://doi.org/10.1016/j.addbeh.2025.108372>
73. Singh, S., Dafoe, A., **Cagle, J. G.,** Campbell, T. C., Lum, H. D., Dorsey Holliman, B., Fischer, S. (2025). Respect for the patient-oncologist relationship may limit serious illness communication by acute and post-acute care clinicians after discharge to a SNF. *JCO Oncology Practice*, 21(2), 163-169. <https://doi.org/10.1200/OP.24.00197>
74. Singh, S., Dafoe, A., Lahoff, D., Tropeano, L., Owens, B., Nielsen, E., **Cagle, J. G.,** Lum H. D., Dorsey-Holliman, B., Fischer, S. (2024). A process evaluation of a palliative care social work intervention for cancer patients in skilled nursing facilities. *Journal of Palliative Medicine*, 27(6), 734-741. <https://doi.org/10.1089/jpm.2023.0381>
75. Sinyor, M., **Men, V. Y.,** Chan, P. P. M., Rain, S., Posel, A., Jayakumar, N., Mitchell, R. H. B., Schaffer, A., Steinberg, R., Pirkis, J., Heisel, M. J., Goldstein, B. I., Redelmeier, D. A., Stack, S., & Niederkrotenthaler, T. (2025). 'Fair and balanced?': Quality of suicide-related reporting on major US cable news networks. *The British Journal of Psychiatry*, 1-8. <https://doi.org/10.1192/bjp.2025.10309>
76. Sinyor, M., Ekstein, D., Chan, P. P. M., **Men, V. Y.,** Malonek, R. S., Schaffer, A., ... & Levi-Belz., Y. (2025). Investigating the impact of parallel media engagement initiatives on suicide reporting in Canada and Israel. *Social Psychiatry and Psychiatric Epidemiology*. <https://doi.org/10.1007/s00127-025-02886-4>
77. Sinyor, M., Shin, S., Lee, J., Stack, S., **Men, V. Y.,** & Niederkrotenthaler, T. (2025). Suicide rates in South Korea and internationally following release of the Netflix series 'Squid Game'. *Social Science & Medicine*, 371, 117934. <https://doi.org/10.1016/j.socscimed.2025.117934>
78. Sinyor, M., **Men, V. Y.,** Chan, P. P. M., Morales, D. S., Levitt, A., & Schaffer, A. (2024). Long-term impact of the Bloor Viaduct suicide barrier on suicides in Toronto: A time-series analysis. *The Canadian Journal of Psychiatry*, 70(4), 328-334. <https://doi.org/10.1177/07067437241293978>

79. Spencer-Thomas, **Frey, J. J.**, & Mortali, M. (in press). Workplace suicide postvention: Research insights and actionable frameworks. In M. German (Ed.). *Suicide in the Workplace: Coping Strategies for Employees and Corporate Leaders*. New York, NY: Palgrave MacMillan. https://doi.org/10.1007/978-3-031-85442-2_11
80. Thai, G. H., Hanna, V., Zhang, P., Green, C. M., **Cagle, J. G.**, Wolff, J. L., & Abshire-Saylor, M. (in press). Asking Older Adults with Impaired Cognition and Care Partners about Serious Illness Experiences can Elicit Goals of Care During Advance Care Planning. *American Journal of Hospice and Palliative Medicine*. <https://doi.org/10.1177/10499091251367337>
81. Titus-Glover, D., **Unick, J.**, Zhu, S., Shim, S., **Deng, Y.**, Shaya, F. (In Press). Leveraging Characteristic Parameters to Inform Recovery Among Women with Opioid Use Disorder. *Substance Use and Addiction Journal*.
82. **Wagner FA**, Cano M, Kamugisha S. The intersectionality framework is a powerful tool to understand underage alcohol use. *Journal of Adolescent Health*, 75(2), 207-208. <https://doi.org/10.1016/j.jadohealth.2024.05.001>
83. Weybright, E. H., Hampilos, K, White, A. J., Watters, C., Fees, J., Greer, M., Doering, E., & **Graham, L. M.** (in press). "I never realized how hard recovery is." A quasi-experimental evaluation of a youth participatory action research project for opioid prevention. *American Journal of Community Psychology*.
84. Witmer, A. M., **Deng, Y.**, Mojtabai R., Wilcox, H. C., & Aluri, J. (2025). The association between college enrollment and suicide attempts by race and ethnicity. *Prevention Science*, 26, 25-30. <https://doi.org/10.1007/s11121-025-01771-5>
85. Witmer, A. M., **Deng, Y.**, Lewis, S., Han, S. C., Heffernan, S., Howland, Z., Wilcox, H. C., & Aluri, J. (2024). The relationship between race, ethnicity, and suicidal thoughts and behaviors among students at institutions of higher education in the U.S. *Current Psychiatry Report*, 26, 573-582. <https://doi.org/10.1007/s11920-024-01530-3>
86. **Woolley, M.E., Greif, G.L.**, & Stubbs, V. (2024). "Social spheres of protection and threat: The experiences of Black men married to White women." *Journal of Family Issues*, 45(10), 2575-2603. <https://doi-org.proxy-hs.researchport.umd.edu/10.1177/0192513X231209052>
87. **Woolley, M.E., Greif, G.L.**, & Stubbs, V. (2024). "Interracial and interethnic marriages: Given recent history, do they feel things have been getting better?" *Social Work Research*, 48(4), 229-239. <https://doi.org/10.1093/swr/svae024>
88. Zhang, P., Erbeding, T. C., Schneider, G. E., Vernick, N. H., & **Cagle, J. G.** (in press). Evaluation of a Community-based Advance Care Planning Campaign for a General Adult Population. *Palliative Medicine Reports*.

PRESENTATIONS

BHWell faculty, staff and students provided **81 presentations** at various conferences and public settings. A full list is below.

1. AbiNader, M. A., Kafka, J. M., **Graham, L. M.** (2024, December). An exploration of coercive control connected to the suicides of individuals who perpetrated intimate partner violence [Conference presentation]. 3rd National Research Conference for the Prevention of Firearm-Related Harms, Seattle, WA United States.
2. Allen, H., Coop, A., Glastra, J., Hughes, M., **Meyer, M.**, & Sandberg, S. (2025, June 16-20). Integrating Psychedelic Coursework into Higher Education. Psychedelic Science Conference. Denver, Colorado.
3. **Beaulieu, M.**, & **Graham, L. M.** (2025, March). Intimate partner violence [Presenter]. Behavioral Health Workforce Integration Service and Education (BHWISE) Substance Use Disorder Interventions Fellowship Fellow Seminar Series. University of Maryland School of Social Work, Baltimore, MD, United States.
4. **Beaulieu, M.**, & **Graham, L. M.** (2024, October). Intimate partner violence [Presenter]. Behavioral Health Workforce Integration Service and Education (BHWISE) Lifespan Fellow Seminar Series. University of Maryland School of Social Work, Baltimore, MD, United States.
5. Benfer, J., Tucker, G., & **Cagle, J. G.** (November, 2024). Perceptions of the “Good Life” among Nursing Home Residents with Dementia, Family, and Staff. Paper presentation at the Gerontological Society of America 2024 Annual Scientific Meeting, Seattle, WA.
6. **Cardenas, I.**, Berlin, L., Alvarez, C., & Sabri, B. (2025, April 14-17). Supporting psychological wellbeing and parenting behaviors among Latina mothers with intimate partner violence experiences. [Poster presentation]. Association for Clinical and Translational Science (ACTS). Washington, DC.
7. **Cardenas, I.**, **Aggarwal, N.**, Postmus, J., & **Hatcher, S.** (2025, January 15-19). Immigration status-related intimate partner violence and financial strain: The role of financial safety and planning. [Poster presentation]. Society for Social Work and Research (SSWR) 29th Annual Conference. Seattle, WA.
8. **Cardenas, I.** (2024, Nov. 4). Adapting the Attachment and Biobehavioral Catch-up (ABC) Program for Latina Mothers with Intimate Partner Violence Victimization Experiences. Johns Hopkins Institute for Clinical and Translational Research - Community Research Advisory Council (C-RAC).
9. **Cardenas, I.** (2024, October 24). Understanding and addressing intimate partner violence in Latinx/e communities. Survivor Link Webinar Series. AmeriCorps. Virtual.
10. **Cardenas, I.** (2024, October 17-19). Factors associated with mental health among intimate partner violence survivors: Do Latina ethnicity and Spanish language moderate effects? [Poster presentation] National Latinx Psychological Association Conference. San Juan, PR.

11. **Cardenas, I.**, Jiwatram-Negron, T., & Fraga Rizo, C. (2024, October 3-5). Cultivating safety and healing: Advancing culturally responsive care for Latina survivors of intimate partner violence. [Panel presentation]. Latino Social Workers Organization Conference. University of Illinois. Chicago, IL.
12. **Deng, Y.** (2025, January). Trends in Suicide Attempt by Race/Ethnicity Among College Students: Findings from Healthy Mind Study, 2014-2023 [Poster session]. The 29th Annual Conference of Society for Social Work and Research, Seattle.
13. **Deng, Y.** (2024, October). The Association Between Sense of Belonging, Perceived Campus Climate and Depression Among Asian American College Students [Poster session]. The Council on Social Work Education Annual Program Meeting, Kansas City.
14. **Frey, J. J., & Mittu, A.**, (2025, April). Barriers to wellbeing among medical residents: A qualitative study. Presentation for American Association of Suicidology Annual Conference, Columbus, OH.
15. **Frey, J. J.** (2025, April 16). Workplace Suicide Prevention: Intersection with Public Health. Presentation for Johns Hopkins University, School of Public Health, Baltimore, MD
16. **Frey, J. J.**, & Tiefenwerth, C. (2025, March 6). Helping your employees struggling with opioids – A call to action. Presentation for the 2025 Chesapeake AIHA/ASSP Educational Seminar. Baltimore, MD.
17. **Frey, J. J.** (2024, December 19). Man Therapy Michigan: An introduction for Washtenaw County and Washtenaw Alive. Virtual
18. **Frey, J. J.**, Tiefenwerth, C., Barna, C., Cloeren, M., & Quinlan, A. (2024, November 22). Maryland's Recovery Friendly Workplace Pilot Program: Innovative ways to support recovery throughout our state. Presentation for University of Maryland, School of Social Work, Continuing Professional Education, Critical Convos Series. Virtual
19. **Frey, J. J.** (2024, November 14). Introduction to event, Naloxone in the workplace. Convening event with UMSSW, UMSSW, Maryland Department of Health, Johns Hopkins Education and Research Center for Occupational Health and Safety at JHU Bloomberg School of Public Health. Baltimore, MD.
20. **Frey, J. J.**, & **Mosby, A.** (2024, October 16). Man Therapy: Innovative, research-based strategies to prevent men's suicide and promote well-being. Presentation for the Midwest Suicide Prevention and Mental Health Summit, Columbus, OH
21. **Frey, J. J.** (Plenary Speaker) (2024, September 23). Workplace suicide prevention and how to engage hard-to-reach populations at risk for suicide. Plenary presentation for Maryland Department of Health 36th Annual Suicide Prevention Conference. Virtual.
22. **Frey, J. J.**, **Mosby, A.**, & **Shook, E.** (2025, June 3). Integrating the Man Therapy Public Health Campaign for Men's Mental Health and Suicide Prevention as Part of Your Suicide Prevention Programming: Effectively Reaching Hard-to-Reach Men, to the Michigan Interagency Migrant Services Committee. Virtual.
23. **Frey, J. J.** (2024, September 10). Workplace suicide prevention. Plenary Speaker for Afternoon of Hope, National Event for Work Suicide Prevention Day. Virtual.

24. **Frey, J. J.** (2024, Sept 5). Integrating Man Therapy into workplace mental health and suicide prevention. Presentation for the Michigan Department of Labor. Virtual.
25. **Frey, J. J.** (2024, Aug 22). Man Therapy Ohio: A resource for primary care providers. Presentation for Central Ohio Primary Care, Virtual Doctor's Lounge. Virtual.
26. **Frey, J. J., Louie, J., & Joel Tajouh, C.** (2024, August 20). Suicide is different: Essential information for caregivers and employers. Webinar for United Survivors of Suicide. Available online: <https://www.youtube.com/watch?v=u6rK9nY89Yc>
27. **Frey, J. J., & Healy, H.** (2024, Aug 19). Flight Attendance Leadership / Management Workforce: Drug and Alcohol Programs. Presentation for the 14th Annual Flight Attendant Drug and Alcohol Program (FADAP) Conference. Baltimore, MD.
28. **Gaines, A. & Cagle, J. G.** (2025, February). Caring for Others: Grief and Bereavement Experiences of Children with Intellectual Disabilities. Poster presented at the 2025 Annual Assembly of the Hospice and Palliative Care, Denver, CO.
29. **Gilgoff, J.** (2025, May). Addressing community needs with data and peer driven solutions. Workshop presented at the On Our Own of Maryland 2025 Conference. Ocean City, MD.
30. **Gilgoff, J.** (2025, April). Multidirectional Learning within Equitable Community-Academic Partnerships to Enhance Peer Recovery. Roundtable presented at the 2025 National Conference on Addiction Recovery Science, Virtual.
31. **Graham, L. M., Kafka, J. M., & AbiNader, M. A.** (2025, May). Innovative methods for leveraging national data to understand intimate partner violence-related fatality: Lessons learned from multiple studies. Oral presentation presented at the Society for Prevention Research Annual Meeting, Seattle, WA, United States. – Named an “Abstract of Distinction” by the Society, which recognizes presentations that are expected to increase engagement and inspire significant scientific interest.
32. **Graham, L. M.** (2025, March). No, you are not ‘just lab rats:’ Engaging youth as research partners rather than subjects [Presenter]. 3rd Annual Interprofessional Program on Academic Community Engagement (IPACE) Symposium: Continuing Conversations in Community Engagement. University of Maryland, Baltimore, MD, United States.
33. **Graham, L. M., Cavaletto, A., & Hopkins, C. Q.** (2025, January). The development and preliminary feasibility testing of a sexual violence prevention bystander intervention program for youth-serving adults. [Conference presentation]. Society for Social Work Research 29th Annual Conference, Seattle, WA, United States.
34. **Graham, L. M., AbiNader, M. A., Kafka, J. M., Fusco, R. A., & Rai, A.** (2025, January). Innovative methods for using National Violent Death Reporting System data to investigate intimate partner violence-related homicides and suicides [Conference presentation]. Roundtable for the Society for Social Work Research 29th Annual Conference, Seattle, WA, United States.
35. **Graham, L. M., Walton, E., & Cavaletto, A.** Addressing and Promoting Safety in Restorative Justice Services that Respond to Sexual Violence: A Qualitative Study of Global Practices [Conference presentation]. Society for Social Work Research 29th Annual Conference, Seattle, WA, United States.

36. **Graham, L. M.** (2024, September). Introduction to the neurobiology of trauma, ACEs, & healing centered engagement [Guest lecturer]. Erin Levitas Initiative for Sexual Violence Prevention Law Student Bootcamp, University of Maryland Carey School of Law, Baltimore, MD, United States.
37. **Graham, L. M.** (2024, August). A healing-centered public health approach to youth violence prevention [Guest lecturer]. Health Equity and Social Justice Graduate Course. University of Maryland School of Nursing, Baltimore, MD, United States.
38. Harfouch, O., **Mammadli, T.**, Mansfield, M., Volpi, C., Ebah, E., Eyasu, R., Sternberg, D., Rosenthal, E., **Whitfield, D. L.** (2025, June). A Stakeholder Analysis of Interventions to Improve Linkage to HRA among Transwomen. Poster presented at the Scientific Meeting of International Anal Neoplasia Society. London, United Kingdom.
39. Harfouch, O., **Whitfield, D.L., Mammadli., T.**, et al (2024, October). Factors associated with completion of high-resolution anoscopy in a cohort of transgender women – findings from a mixed-methods study. Poster presented at IDWeek. Los Angeles, CA.
40. **Hopkins, K. & Meyer, M.** (2025). Women’s Leadership Development and the Human-Centered Framework. Presentation at the 6th Annual UMBrella Women’s History Month Symposium on Championing Change: The Role of Allies in Women’s Advancement.
41. **Hopkins, K. & Meyer, M.** (2025). Keynote address: Impact of Leadership Development on Womens’ Individual and Organizational Behaviors. DMI Management Conference, Beijing Wuzi University and Xiangnan University.
42. **Hopkins, K. & Meyer, M.** (2024). Human-Centered Leadership in Everyday Practice. Workshop presented to University of Maryland School of Social Work Field Instructors.
43. Hopkins, C. Q., **Graham, L. M.**, Schertzing, N., Ames-Messinger, E., & Jachman, M. (2024, July). Employing restorative practices in a comprehensive public health approach to prevent and respond to sexual violence [Conference presentation]. 9th National Conference on Community and Restorative Justice, Washington, DC, United States.
44. Jeong, J., & **Sacco, P.** (2025, January). Dimensionality and validity of the gambling motives questionnaire – Financial among lottery loyalty program participants. [Poster Presentation] Society for Social Work and Research Ann, Seattle. WA.
45. Kafka, J. M., Lyons, V., Rivara, F. **Graham, L. M.**, AbiNader, M. A., Mustafa, A., & Cheung, A. (2024, December). Risk factors for intimate partner homicide-suicide: A case control study focused on the role of firearms [Conference presentation]. 3rd National Research Conference for the Prevention of Firearm-Related Harms, Seattle, WA United States.
46. Kafka, J. M., AbiNader, M. A., **Graham, L. M.** (2024, October). Leveraging national data to understand connections between intimate partner violence and fatality: Lessons learned from multiple studies [Presentation co-author]. Community of Practice for the Study of Domestic Homicides Online Seminar Series, Virtual, International.
47. **Kearley, B.**, and Betsinger, A. (2024). Strategies to Advance the Implementation of Evidence-Based Policies and Practices in Child Serving Systems. Presented at the American Society of Criminology Conference, San Francisco, CA.

48. **Lewis, E. M.** (2025, May). Championing QPI: Leading with Vision, Elevating Every Voice. Presented at 2025 QPI National Conference, San Francisco, California.
49. **Lewis, E. M.**, Lemmons, B.P., Dorsey, M.S., Brown, A., & Johnson Jr, W. E. (2025, January). Understanding Black Father Involvement in Education in the Context of Systemic Inequities. Paper presentation at the Society for Social Work and Research 29th Annual Conference, Seattle, Washington.
50. **Lewis, E. M.** Presentation at the HBCU Student Leadership & Social Justice conference at Coppin State in March: Black Fatherhood Advocacy: Advancing Justice, Healing, & Liberation Through Scholarship and Practice.
51. **Lewis, E. M.**, Doyle, O., Lemmons, B.P., Cryer-Coupet, Q.R., & Bellamy, J. (2024, October). Integration of Father Focused Content in Social Work Education: Teaching Practices, Challenges, and Opportunities. Paper presentation at the Council for Social Work Education 70th Annual Program Meeting, Kansas City, Missouri.
52. **Mammadli, T.**, & **Whitfield, D. L.** (2024, October). Mentoring LGBTQ+ doctoral students in research: Lessons learned about culturally responsive practices. Oral presentation at the annual program meeting of the Council on Social Work Education. Kansas City, MO, U.S.
53. Mellinger, M. S., Ting, L., **Cardenas, I.**, Graham, L. M. (2024, July 14-16). Survivors' engagement with the legal system: Critical assessments, considerations, and recommendations to maintain individual agency and power [Paper presentation]. Violence Prevention Research Conference. Portsmouth, NH.
54. **Meribole, J.**, **Frey, J. J.**, **Deghuie, C. T.**, **Mosby, A.**, **Xu, A.**, & Louie, J. (2025, April). Caregiver's experiences in the workplace while caring for people who have suicidal ideation and/or behavior. Presentation for University of Maryland, School of Social Work's Research Day, Baltimore, MD
55. **Meribole, J.**, **Frey, J. J.**, **Deghuie, C. T.**, **Mosby, A.**, Xu, A., & Louie, J. (2025, April). Caregiver's experiences in the workplace while caring for people who have suicidal ideation and/or behavior. Presentation for Suicide Research Symposium, Virtual.
56. **Meyer, M.** (2025). Psychedelics in Social Work: Opportunities and Challenges. Paper presentation at the Society for Social Work and Research 29th Annual Conference, Seattle, Washington.
57. **Meyer, M.** (2025). Reflections on 20+ years of Community Engagement in Baltimore, Maryland. Presentation to USONA Institute UAspire Clinical Trial Recruitment and Retention Roundtable.
58. **Meyer, M.** (2025). UMB's Interdisciplinary approach to Workforce Education on Psychedelic Science and Therapy. University Psychedelic Education Program (U-PEP) recruitment session, Joe and Sandy Samberg Foundation.
59. **Meyer, M.** & **Hopkins K.** (2024). Elements and Impacts of a Foundation-supported Learning Community to Build the Capacities of Community-based Nonprofits. Network for Social Work Management Annual Forward Thinking Summit (Virtual).

- 60. Michalopoulos, L.,** Mubela, M., Witola, G., Northrup, T., & **Aggarwal, N.** (2025, Jan). Development of a mobile application addressing the health and mental health needs of long-distance truckers in Zambia: Preliminary findings and lessons learned [Panelist]. 24th International Consortium for Social Development Biennial Conference, Rajagiri Business School, Kakkanad, India
61. Mondle, J., **Gilgoff J, Frey, J. J.,** Rose, K., Cantrell, J., Jones, D., & Cloeren, M. (2024, Oct 26). Potential role of online skills preparation for employment in recovery (PROSPER/Online Skills). Poster presented at the Mid-Atlantic Regional Conference in Occupational and Environmental Medicine (MARCOEM), Baltimore, MD.
62. Nesvet, M., Floyd, A., **Cagle, J. G.,** Elftmann, H., & Unroe, K. (2024, November). An Analysis of Palliative Care Provider Nursing Home Consultations for Patients with Cognitive Impairment. Paper presentation at the Gerontological Society of America 2024 Annual Scientific Meeting, Seattle, WA.
63. Nowakowski-Sims, E., **Meyer, M,** & Edmond, T. (2025). Psychedelics in Social Work: Opportunities and Challenges Roundtable. Society for Research and Social Work (SSWR) Annual Conference. Seattle, Washington.
64. Quinlan, A. & **Mosby, A.** Presentation, Partners in Prevention – Construction Safety Professionals as Champions in Preventing Overdose Deaths, at the Mid-Atlantic Construction Safety Conference (MACSC), Greenbelt, MD.
65. **Rose, T.** Panelist – Taking Care of Us, 3rd annual roundtable: Legacy of Strength: Building a Path to Wellness; sponsored by Maryland Department of Health- Behavioral Health Administration.
66. **Sacco, P.** Bifactor Confirmatory Factor Analysis of the Gambling Motives Questionnaire Financial Among Lottery Loyalty Program Participants: Associations with Gambling Problems. Paper presentation at the Society for Social Work and Research 29th Annual Conference, Seattle, Washington.
67. **Sacco, P** & Jeong, J. (2024, October) Assessing risk for problem gambling among lottery players: A machine learning approach, [Poster Presentation] ICRG Conference on Gambling and Addiction, Las Vegas, Nevada
68. **Shook, E., Frey, J. J.,** Vossler, T., & Miller, T. (2025, April). Integrating the Man Therapy public health campaign for men’s mental health and suicide prevention as part of your suicide prevention programming: Effectively reaching hard-to-reach men. Presentation for American Association of Suicidology Annual Conference, Columbus, OH.
69. Steinberg, R., **Men, V. Y.,** Wilcox, H., Vidal, C., (September 2024). Integrating the voice of lived experience to enhance suicide prevention interventions: The development of co-designed caring contacts messages. The Mental Health Services Conference, Baltimore, United States.
70. Vetter, V., Carpenter, J., Campbell, G., McPherson, M., Wright, P., **Cagle, J. G.,** & Flynn, K. (February, 2025). Sexual Health Concerns in Gynecologic Oncology Patients with and without Malignant Fistula. Poster presented at the 2025 Annual Assembly of the Hospice and Palliative Care, Denver, CO.

71. **Wagner, F.** Conference to undergraduate students from Psychology, Sociology, and Communications at the Universidad Autónoma de Queretaro, San Juan del Rio campus, on August 23, 2024, titled “Investigación Participativa Con y Para Jóvenes de Kenia.”
72. **Wagner, F.** Keynote conference on November 5th, 2024, with the title Salud Mental en el Ámbito Universitario. Un abordaje desde la Salud Pública, at the Universidad Autónoma de Queretaro
73. **Wagner, F.** Presentation at the Midterm Reunion of the Fulbright-Garcia Robles grantees on January 15, 2025 with the title “Enhancing Suicide Prevention with Public Mental Health Research Among Youth in Queretaro, Mexico”
74. **Wagner, F.** Co-authored roundtable presentation titled “Multidirectional Learning within Equitable Community-Academic Partnerships to Enhance Peer Recovery” at the 2025 National Conference on Addiction Recovery Science, on April 23-24, 2025.
75. Walls, N.E., Calls, J.B., Holloway, B., **Mammadli, T.**, & **Whitfield, D.L.** (2024, October). Toward conceptual clarity on transition interruption experiences among transgender and nonbinary individuals. Oral presentation at the annual program meeting of the Council on Social Work Education. Kansas City, MO, U.S
76. Walton, E., **Cavaletto, A.**, **Graham, L. M.**, & Hopkins, C. Q. (2025, January). Addressing and promoting safety in restorative justice services that respond to sexual violence: A qualitative study of global practices. [Poster presentation]. Society for Social Work Research 29th Annual Conference, Seattle, WA, United States.
77. **Whitfield, D.**, **Mummadli, T.** (2025). Transition Decisions of Transgender and Nonbinary Persons Exposed to Gender Identity Conversion Efforts. Paper presentation at the Society for Social Work and Research 29th Annual Conference, Seattle, Washington.
78. **Whitfield, D.**, **Mummadli, T.** (2025). Examining PrEP Cascade Engagement in a Statewide Sample of Transgender, Nonbinary, and Intersex Adult. Paper presentation at the Society for Social Work and Research 29th Annual Conference, Seattle, Washington.
79. **Xu, A.**, **Frey, J. J.**, & **Mittu, A.**, (2025, April). Barriers to wellbeing among medical residents: A qualitative study. Presentation for University of Maryland, School of Social Work’s Research Day, Baltimore, MD
80. Zhang, P., Clem, S., Guan, T., Becker, T.D., & **Sacco. P.** (2024, November). Validation of Modified Sense of Control Scale Among Older Cancer Patients. [Poster presentation]. Gerontological Society of America 2024 Annual Scientific Meeting, Seattle, WA, United States.
81. Zhang, P., Wang, Y., **Cagle, J. G.**, & Wang, K. (2024, November). Social Work Involvement in Advance Care Planning Post 2015 Medicare Policy Change: A Systematic Review. Paper presentation at the Gerontological Society of America 2024 Annual Scientific Meeting, Seattle, WA.

ACCEPTED PRESENTATIONS

BHWell members submitted proposals in FY25 that will be presented in FY26.

1. **Frey, J.J., Cloeren, M.,** Tiefenwerth, C. & Quinlan, A. (2025, November). Implementing Recovery Friendly Workplaces in Maryland: Results from a Pilot Program Integrating Substance Use and Mental Health Prevention and Recovery. This proposal is currently waitlisted for presentation at the American Public Health Association (APHA) Annual Meeting in Washington, DC.
2. **Men, V., Hunt, E., & Frey, J.J.** (2025, November). Impact of cannabis legalization on drug-, alcohol-induced, and suicide deaths in Maryland and Virginia: A time-series analysis. Presentation at the American Public Health Association (APHA) Annual Meeting in Washington, DC.
3. **Men, V.** (2025, November). Admission to the Emergency Department Due to Suicide Attempt among Individuals with Suicidal ideation: A Survival Analysis. Presentation at IASR/AFSP International Summit on Suicide Research, Boston, MA.
4. **Meribole, J. & Frey, J.J.** (2025, November). Examining suicide caregiver's experiences of supports received or needed in the workplace. Presentation at the American Public Health Association (APHA) Annual Meeting in Washington, DC.
5. **Shook, E., Mosby, A., & Frey, J.J.** (2025, November). Utilizing high-tech and high-touch methods to engage men in suicide prevention through a state-wide public health campaign. Presentation at the American Public Health Association (APHA) Annual Meeting in Washington, DC.
6. **Yeung, A.** (2025, November). Risk factors of suicide attempts among high school students with suicidal ideation: A machine learning approach. Boston, MA.